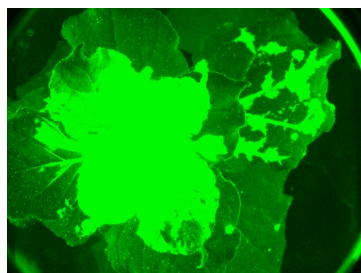
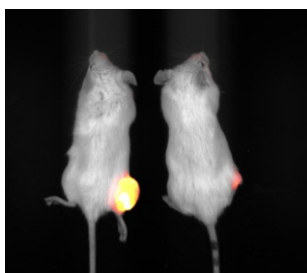
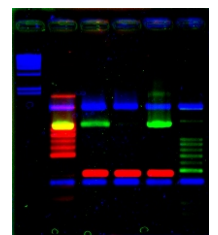
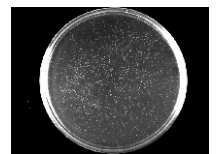
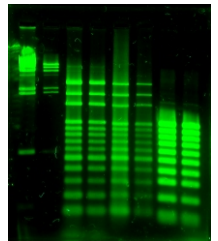
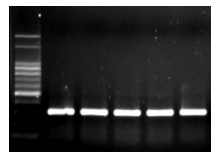
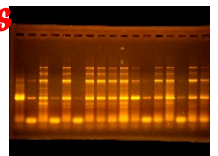
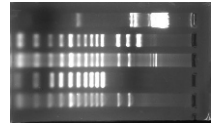


MultiGel-21[®] (MGIS-21 Multi-function Gel Image System)

Next Generation

*Gel Documentation
Chemiluminescence
multi-color fluorescent
Real-time electrophoresis*

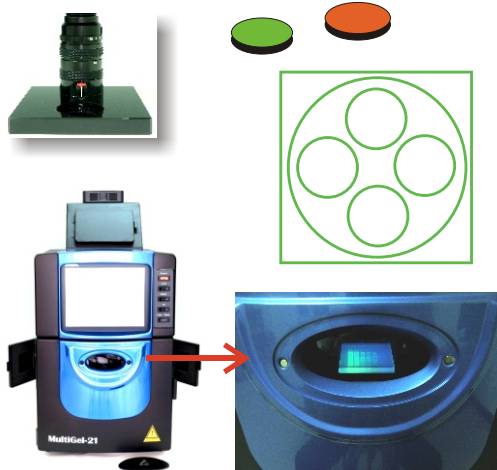


MultiGel-21 is registered trademark of TOPBIO Company

MultiGel-21[®] (MGIS-21-C2-1M Multi-function Gel Image System)



Filter selector:
have 4 filter well can insert different
wavelength filter, easy change,



Multi-function Gel Image System has the function of traditional Gel Documentation and even can upgrade to multi- color fluorescent detection, Chemiluminescence analysis and Real-time electrophoresis.

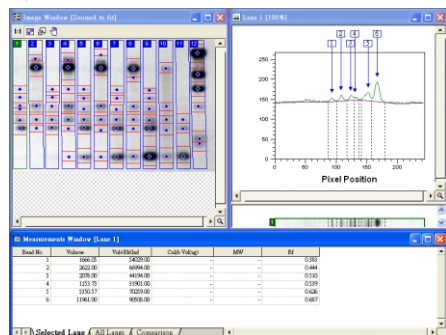
Specification:

1. Cool CCD Capture system, grayscale image.
2. Temperature difference= -25°C (below ambient)
3. CCD Resolution: 1.44M pixels
4. Image resolution: 9M pixels
5. filter selector: mounted on top of machine, easy to insert filter or take off filter .
4 filter well, rotated selection, dark box. with EtBr filter
(Option: other wavelength / SYBR Green filter, SYPRO Ruby filter)
6. Quantitative resolution : 16Bits, 65535scale
7. Filter wavelength: 600nm
8. Exposure time : 0.001 seconds to 100,000 seconds (>24 hours).
9. Application: EtBr Gel, SYBR Green Gel, SYPRO Orange Gel, SYPRO Ruby, western blot, X-ray film, TLC, Tissue Section, Commasie blue Gel, Colony plate, Realtime electrophoresis, Chemiluminescence.
10. computer connection: be able to connect with notebook ,or PC
11. ZOOM : 8-48mm / f1.0
12. reflectance light: white ,8wX2. (option: UV light,254nm, 306nm, 365nm)
13. Safety door: automatic shut down UV when door is open, can switch to continue light on when door is open for gel cutting.
14. quantitate each band intensity, can merge different color image, regular and irregular area size calculation , length / curve measure, 3D image display.
15. Option: Flexible fluorescent lamp for real time electrophoresis or fluorescent sample, wavelength 425nm, 530nm , flexible tube, can be adjust any angle.
16. UV wavelength: 306nm, 15W x 6 tubes, fast lighting up, high and low intensity switch, UV view size =200x200mm (Option: other wavelength selection, 254nm, 365nm or dual-wave length 254+365nm), UV leakage safety device .
17. Realtime Electrophoresis: continuously tracking and record the proceeding gel images, prevent DNA band run over from gel area,
18. UV LightBox can move in and out freely .
Convenience for cutting gel operation.
19. 2 hand doors locate on the left and right side easily to access the gel for cutting bands..

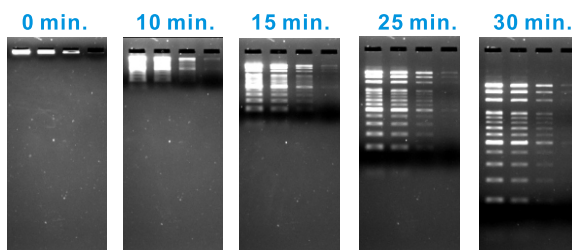


20. Integrate touch monitor save bench space and can be rotated for different angle.
21. UV resistant window with 2 layer anti-UV transparent protection.

Quantitative software:



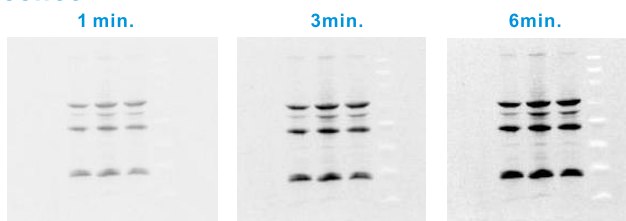
Real Time Electrophoresis



Time lapse run, view and record DNA bands and confirm PCR product in the 1st minute may be positive or negative, also replay the serial images like movie to check weak bands, freely save each image as individual file and keep resolution at 1,440,000 pixels. Also optimize gel band pattern e.g. RAPD, pulse field

chemiluminescence

Different Time-Lapse capture can show weak bands to be more visible and clear



E-mail:
topbio@ms24.hinet.net

Web :
<http://www.topbio.com.tw>