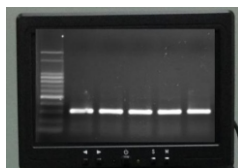


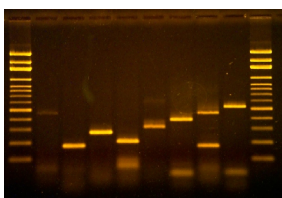
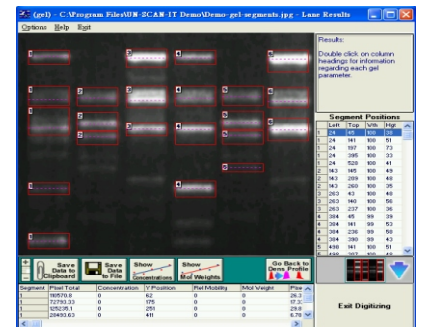
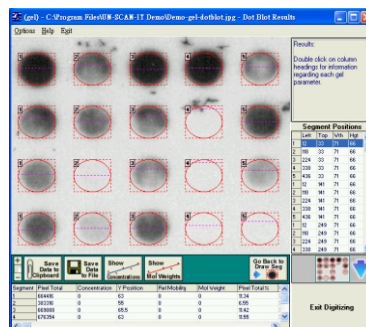


LCD display  
15 x 8.5cm can  
view real-time  
image and review  
all of images store  
in memory card.  
Display position  
can be adjust  
different angle  
by move display  
forward or backward or up and down

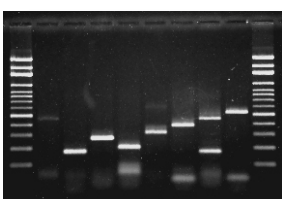


1. High resolution 24,000,000 pixels
2. Sensitivity setting: ISO = 100-12000
3. Image capture: Color, B&W
4. Big monitor: 7 inch display Gel image (HDMI)
5. Directly operation: don't need computer control, protect from EtBr contaminate
6. Image can be transfer to computer via cable or memory card transfer to card reader or wifi.
7. Long time exposure: 1/4000 second - 60 second. Increase weak bands to be more visible.
8. Aperture range : maximum F4.0(W) / F6.0(T)
9. Reflective light source: 4W x 2 tubes / white light or change to other wavelength light source (option) e.g. UV 365nm, 254nm, 306nm. With or without uv filter.
10. Manual zoom in , zoom out, focus.
11. Application:  
EtBr gel, Coomassie blue gel, Silver stain gel, SYBR Green gel, SYPRO Orange gel, SYPRO Ruby gel , TLC Plate, X-RAY film, Western blot membrane
12. Moveable dark hook for easy transfer from UV light box to white light box
13. Data wireless send to PC or smartphone
14. Fit on any kind of UV transilluminator or blue light box (option: platform adapter) .

Quantitative software (option):  
\*calculate each band volume.  
\*calculate each band concentration.  
\*Molecular weight calculation.  
\*other analysis software  
2-D image comparison,  
RFLP / RAPD dendrogram,  
DNA sequencing,  
Colony counting etc..



Color image

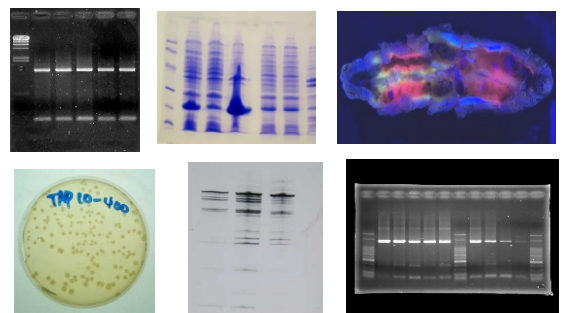


B&W image



Combine with any type of  
UV Transilluminators.

Good image quality and high resolution



CE

FC

TOPBIO

E-mail:  
topbio@ms24.hinet.net

Web:  
http://www.topbio.com.tw